

2025

“

”

2025 7

.....	2
.....	3
.....	4
.....	4
.....	9
.....	12
.....	14
.....	15
.....	18

“ ”

“ ”

GB/T 29467- 2012

GB/T 31870- 2015

2020

2024 1 1 2024 12 31

32789.15

2000 7 31

65

4%

21

3

"

"

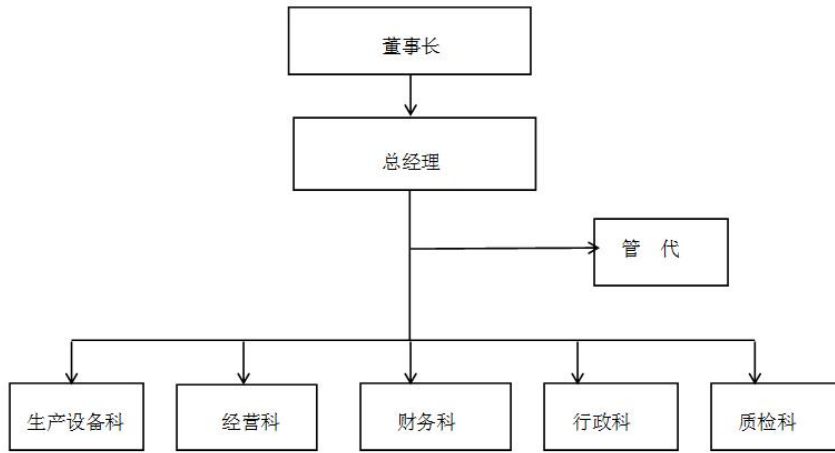
789 1-7

<

>

2014

3.1



3.2

3.2.1

"

"

1

95% 2

92

GB/T19580

KPI

3. 2. 2

PDCA

3. 2. 3

PDCA

3.3

APQP

FMEA

4.1

4.1.1

"

"

4.1.2

4.2

4.2.1

4.2.2

»

4. 2. 3

Al'f' ħñB•ÿi'Y

Ã

6

24 h

48h

5.1

5.2

5. 3

I SO9001

I SO14001

I SO45001

"

"

"

"

5. 4



6.1

"

"

6.2

/

6.4

100%

7.1

7.1.1

7.1.2

7.2

7.2.1

7.2.2

7.3

1

2

3

1

- - -

2

" " " "

3

- - -

4

1

ISO9001 2015

/

2