

2024 " "

2024 8

| | |
|-------|----|
| | 2 |
| | 4 |
| | 5 |
| | 6 |
| | 12 |
| | 16 |
| | 19 |
| | 24 |
| | 26 |

“ ”

“ ”

GB/T 29467-2012

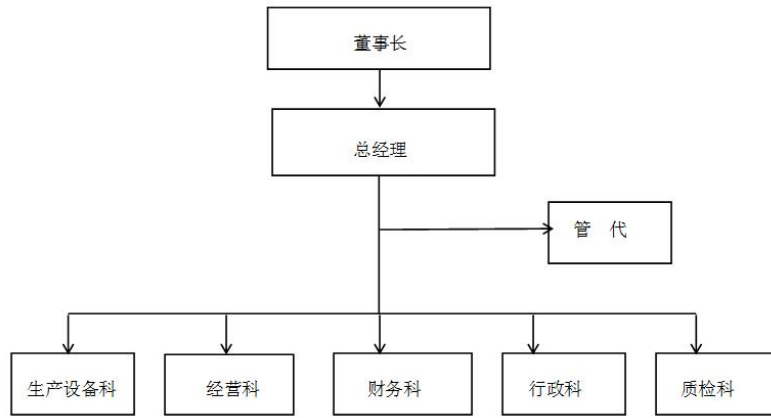
100

<

>

2014

3.1



--

--

- ---

3.2

3.2.1

"

"

1

95% 2

92

GB/T19580

KPI

3. 2. 2

PDCA

3. 2. 3

PDCA

3.3

APQP

FMEA

4.1

4.1.1

"

"

4.1.2

4.2

4.2.1

4.2.2

4. 2. 3

"

"

"

"

4. 2. 3

6

24 h

48 h

5.1

5.2

5. 3

I SO9001

I SO14001

I SO45001

"

"

"

"

5. 4

6.1

"

"

6.2

/

6.3

6.4

100%

7.1

7.1.1

7.1.2

7.2

7.2.1

7.2.2

7.3

1

2

3

- - -

1

2

" " " "

3

- - -

4

1

ISO9001

/

2